

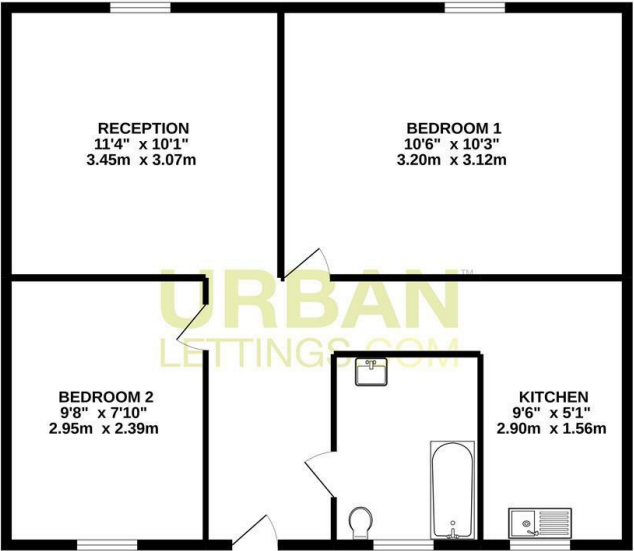


## 18 Cameford Court, New Park Road, London, SW2 4LH

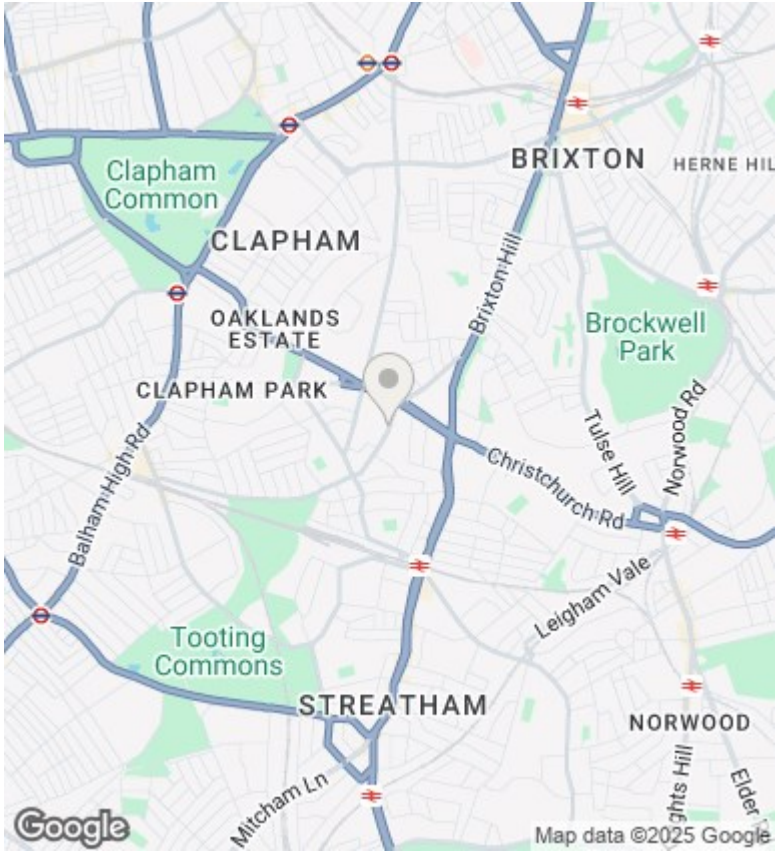
£1,750 PCM

- Well Presented
- High Ceilings
- Wood Flooring
- Two Double Bedrooms
- Feature Fireplace
- Access to Tube & Rail
- 1930's Private Residential Estate
- Modern Bathroom

SECOND FLOOR  
530 sq.ft. (49.2 sq.m.) approx.



2 BEDROOM FLAT  
TOTAL FLOOR AREA: 530 sq ft (49.2 sq m) approx.  
While every attempt has been made to ensure the accuracy of the floorplan contained herein, measurements of blocks, corridors, rooms and any other items are approximate and no responsibility is taken for any error, omission or misstatement. This plan is for illustrative purposes only and should be used as such by any prospective purchaser. The various systems and appliances shown have not been tested and no guarantee as to their operability or efficiency can be given.  
Made with floorplan 12/2022



## Directions

## Viewings

Viewings by arrangement only. Call 020 7585 2761 to make an appointment.

## Council Tax Band

C

## EPC Rating:

C

